



Dr. BERTRAND®  
PARIS

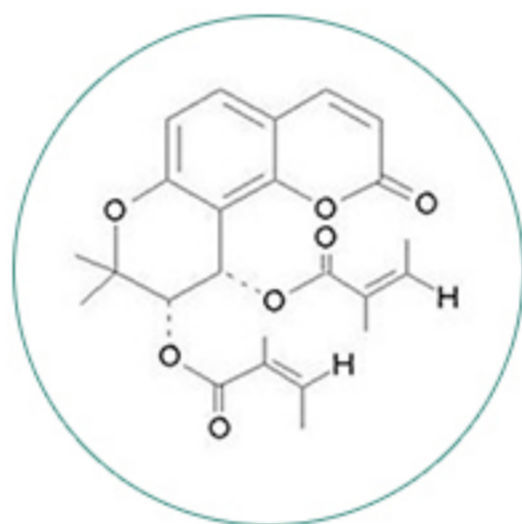
Nano Botanical  
Ultracalming  
Serum  
with CIC2 Stem Cell

2

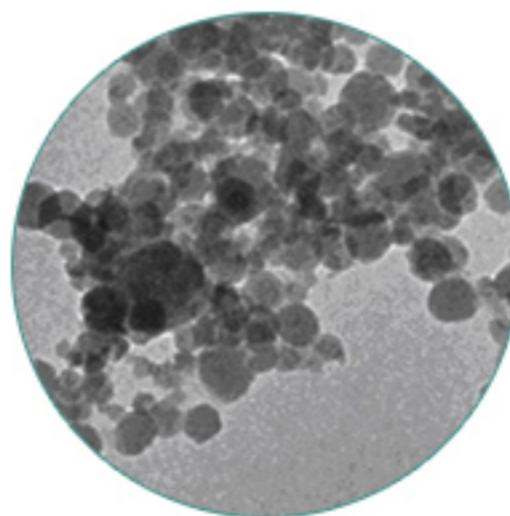
1fl.oz (30ml)

# Formulate with Nano-sized Herbal Complex and Nano Zinc

Nano-sized Herbal Complex and Zinc performance an easier and faster penetration into deeper skin tissue for a maximum effect in soothing inflammation and replenishing the nutrients for skin recovery



Nano-sized Herbal Complex



Nano Zinc

**Dr. BERTRAND®**  
PARIS



Formulate with **CIC2 Stem Cell**



Skin irritation



Use it after 3 days

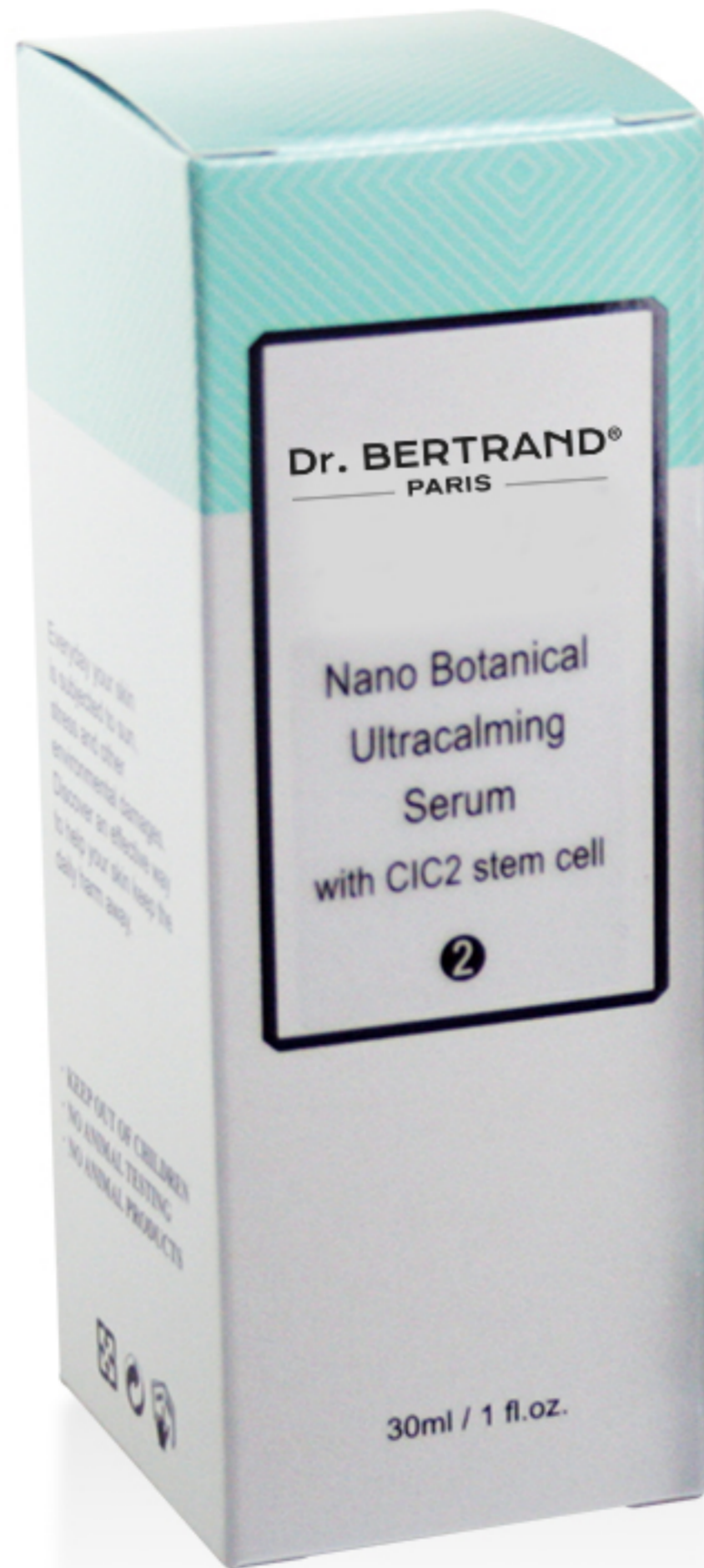
Reveal illuminated  
and bright skin

Promote skin cell  
regeneration

**MSDS**



**Dr. BERTRAND®**  
PARIS



**MSDS**



# Formulate with Plant Extract

Effectively repair skin irritation, swelling and inflammation

The post-procedure skin won't be darkening



Glycyrrhiza Glabra  
(Licorice) Root Extract



Centella Asiatica